













# A suitable solution for every situation



The SR has endless possibilities. The SR creates optimum climate separation in all doorways and is also suitable for Daikin systems. There is a solution available for many monitoring and control options.

## Example type code:

### SRV S-100-DK-80-F

<b>SRV</b>	=	SR with Daikin VRV
<b>SRQ</b>	=	SR with Daikin ERQ
<b>Capacity</b>		
S	=	Small (200 - 240 cm)
M	=	Medium (220 - 280 cm)
L	=	Large (250 - 330 cm)
XL	=	Extra Large (300 - 400 cm)
<b>Length (cm)</b>		
100 - 150 - 200 - 250		
<b>DX</b>	=	Refrigerant R410a
<b>DXE</b>	=	DK + Electrical heating
<b>Capacity index</b>		
80 - 100 - 125 - 140 - 250		
<b>Model</b>		
F	=	Free hanging model
R	=	Recessed model
C	=	Cassette model

For the water, electrical, hybrid and ambient versions a separate brochure is available.

## For every door width

Doors wider than 250 cm are covered by placing multiple units next to each other.

## Control options

- Auto-active control with b-touch control
- panel b-connect monitoring module
- Modbus communication

## Daikin

- DX: Direct expansion SRQ
- S-100 not available

## Standard colours

- Traffic white (RAL 9016) with accent end panels in silver grey (RAL 9006)
- Silver grey (RAL 9006)
- Other RAL classic colours available on request

## Customer specific styling

The inlays in the end panels are supplied in grey and white as standard. The removable inlays in the end panels can also be styled specifically if required (e.g. colour and logo).



# Delivery and accessories



i-sense

## Technologies

- i-sense infrared technology to collect accurate temperature data in the door opening
- CHIPS technology to adjust the settings automatically
- Controlled air strength technology for the best downward penetration
- Rectifier technology to reach the floor at the lowest possible speed

## DX version

For a complete installation of model SRV or SRQ several additional components to be delivery by Daikin are necessary.



b-touch control panel

## Standard delivery

- Modbus communication
- Air filters
- Ceiling mounting brackets
- Duct connections R-model (ducts not included)

## Accessory set for auto-active control

- b-touch control panel
- Two Biddle low voltage cables: 1 x 5 m, 1 x 25 m
- Two end panels (model F)



end panels - 2 colours

## Optional

- b-connect monitoring module
- Filter sensor
- Wall mounting brackets: standard and design
- Threaded rod covers
- Door contact switch
- External outdoor sensor

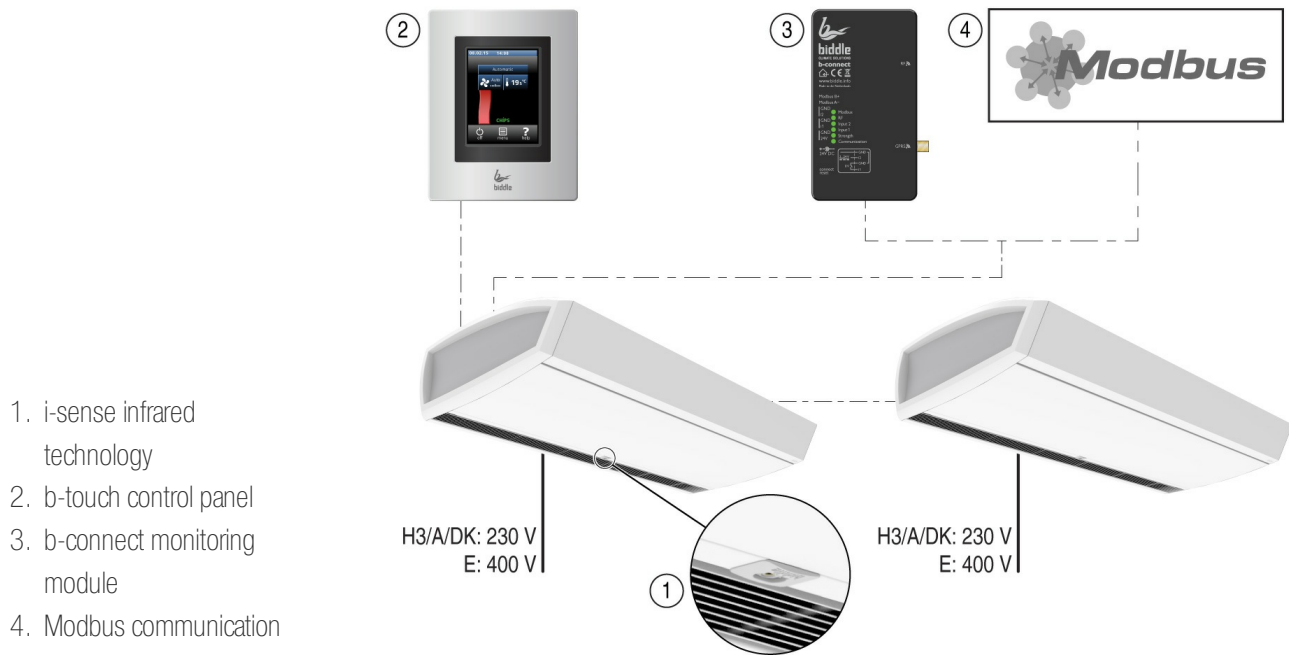
## Installation possibilities

- Wall mounting brackets
- M8 threaded rods (see also - threaded rod covers)



# Electrical connections

The SR is delivered as standard with the b-touch control panel and i-sense infrared technology. It is also possible to specify the optional b-connect monitoring module or communicate via Modbus, the latter of which is a standard feature on all units.



# Specifications



## Casing

The casing is made of zinc plated sheet steel, and has an inspection panel in the bottom. The inlet grilles are made of anodised aluminium with fixed fins. The inlet module and the end panels as well as the casing are, as a standard, supplied in silver grey (RAL 9006) or traffic white (RAL 9016). The end panels of the white SR have a grey inlay. Other RAL casing colour finishes are available for an additional charge.

## Motor / Fan assembly

The air curtain is equipped with two or more (depending on type) dual-inlet, vibration free suspended centrifugal fans. Each fan is driven by a rotor motor on bearings, which are seal for life and no maintenance is required. The fan casing and the impeller are made of zinc coated plate steel. The motors, as standard, are fitted with thermal contacts. These thermal contacts break the circuit of the motor when the maximum permissible motor temperature is exceeded.

## Heating coil

**DX:** made up of 3/8" copper tubes and aluminium fins. The fluid connection is 9.52 mm, and the gas connection is 16 mm (with 100, S/M-150 & 200, S-250), 19 mm (with M-250, L/XL-150) or 22 mm (with L-200 en 250).

**Hybrid:** a combination of DX with an electrical stitched wire heating element.

## Connections

To connect DX units to the mains supply, they come with a fixed cable (approx. 2 m long) with a moulded, earthed plug. The connection for Daikin units and the connector plate are fitted on the top of the unit.

The mains cable for electrical heating must be connected within the unit. The top of the unit has a cable gland for feeding through the feeder cable. A 5-core cable (3 phases + earth + neutral) is required for proper connection.

# Explanation technical data

Because of the auto-active control of the SR DX air curtain the outlet temperature varies at all speeds, depending on the situation. The maximum heating capacity of the DX air curtains is the same as the heating capacity in the highest fan speed.

## Selection Daikin outdoor unit

To determine the correct Daikin outdoor unit for model SRV, you need to add together the capacity indexes of all the indoor units.

## Sound

The sound data is based on the direct field, in a situation with an open door and a sound absorbing ceiling. The sound data for different situations can be determined by adding the adjacent values to the table values.

Closed door	<b>+ 1 à 2 dB(A)</b>
Acoustical "hard" ceiling	<b>+ 2 à 3 dB(A)</b>

Deviating distances and several units next to each other can be calculated with the table below. Data from the 1 m unit, measured at a distance of 3 m, is the basic assumption. The factors apply to all types of air curtains.

## Correction factors for sound pressure in dB(A)

distance (m)	total unit length (m)					
	1	1,5	2	2,5	3	3,5
1	+9.5	+11.3	+12.6	+13.5	+14.3	+15.0
2	+3.5	+5.3	+6.5	+7.5	+8.3	+9.0
3	0	+1.8	+3.0	+4.0	+4.8	+5.4
4	-2.5	-0.7	+0.5	+1.5	+2.3	+2.9
5	-4.4	-2.7	-1.4	-0.5	+0.3	+1.0

## Note

The SRQ S-100 unit is not available.

## DX heating

<b>SRV S-100-DK</b>							
nominal unit length	m	<b>1</b>					
door height	m	<b>2 - 2.4</b>					
electrical supply	V/ph/Hz	230/1/50					
max. input current (1 phase)	A	0,88					
max. fan power	kW	0,2					
max. specific fan power	W/l/s	0,63					
max heating capacity	kW	7,8					
capacity index		80					
weight casing style F / R / C	kg	52/62/60					
air inlet temperature	°C	20					
discharge air temperature	°C	30 - 45					
speed		<b>1</b>	<b>2</b>	<b>3</b>	<b>4</b>	<b>5</b>	<b>6</b>
air volume	m <sup>3</sup> /h	440	600	680	880	1010	1130
heating capacity	kW	3,6	4,7	5,2	6,4	7,1	7,8
sound pressure level at 3m	dB(A)	27	33	37	42	46	48

<b>SRV/Q S-150-DK</b>							
nominal unit length	m	<b>1,5</b>					
door height	m	<b>2 - 2.4</b>					
electrical supply	V/ph/Hz	230/1/50					
max. input current (1 phase)	A	1,32					
max. fan power	kW	0,3					
max. specific fan power	W/l/s	0,63					
max heating capacity	kW	9,7					
capacity index		80					
weight casing style F / R / C	kg	73/89/84					
air inlet temperature	°C	20					
discharge air temperature	°C	30 - 45					
speed		<b>1</b>	<b>2</b>	<b>3</b>	<b>4</b>	<b>5</b>	<b>6</b>
air volume	m <sup>3</sup> /h	660	910	1020	1320	1520	1700
heating capacity	kW	4,9	6,2	6,8	8,2	9	9,7
sound pressure level at 3m	dB(A)	28	35	39	43	47	50

# DX heating

<b>SRV/Q S-200-DK</b>							
nominal unit length	m	<b>2</b>					
door height	m	<b>2 - 2.4</b>					
electrical supply	V/ph/Hz	230/1/50					
max. input current (1 phase)	A	1,76					
max. fan power	kW	0,39					
max. specific fan power	W/l/s	0,63					
max heating capacity	kW	12,6					
capacity index		100					
weight casing style F / R / C	kg	88/109/103					
air inlet temperature	°C	20					
discharge air temperature	°C	30 - 45					
speed		<b>1</b>	<b>2</b>	<b>3</b>	<b>4</b>	<b>5</b>	<b>6</b>
air volume	m <sup>3</sup> /h	880	1210	1360	1770	2020	2260
heating capacity	kW	6,4	8,1	8,9	10,6	11,7	12,6
sound pressure level at 3m	dB(A)	30	36	40	45	49	51

<b>SRV/Q S-250-DK</b>							
nominal unit length	m	<b>2,5</b>					
door height	m	<b>2 - 2.4</b>					
electrical supply	V/ph/Hz	230/1/50					
max. input current (1 phase)	A	2,2					
max. fan power	kW	0,49					
max. specific fan power	W/l/s	0,63					
max heating capacity	kW	17,3					
capacity index		140					
weight casing style F / R / C	kg	113/139/131					
air inlet temperature	°C	20					
discharge air temperature	°C	30 - 45					
speed		<b>1</b>	<b>2</b>	<b>3</b>	<b>4</b>	<b>5</b>	<b>6</b>
air volume	m <sup>3</sup> /h	1100	1510	1700	2210	2530	2830
heating capacity	kW	8,5	10,9	12	14,5	16	17,3
sound pressure level at 3m	dB(A)	31	37	41	46	50	52

# DX heating

<b>SRV/Q M-100-DK</b>							
nominal unit length	m	<b>1</b>					
door height	m	<b>2.2 - 2.8</b>					
electrical supply	V/ph/Hz	230/1/50					
max. input current (1 phase)	A	1,25					
max. fan power	kW	0,27					
max. specific fan power	W/l/s	0,63					
max heating capacity	kW	9,7					
capacity index		80					
weight casing style F / R / C	kg	59/69/67					
air inlet temperature	°C	20					
discharge air temperature	°C	30 - 45					
speed		<b>1</b>	<b>2</b>	<b>3</b>	<b>4</b>	<b>5</b>	<b>6</b>
air volume	m <sup>3</sup> /h	490	740	880	1180	1310	1530
heating capacity	kW	3,9	5,6	6,4	8	8,6	9,7
sound pressure level at 3m	dB(A)	25	34	39	45	50	53

<b>SRV/Q M-150-DK</b>							
nominal unit length	m	<b>1,5</b>					
door height	m	<b>2.2 - 2.8</b>					
electrical supply	V/ph/Hz	230/1/50					
max. input current (1 phase)	A	1,87					
max. fan power	kW	0,4					
max. specific fan power	W/l/s	0,63					
max heating capacity	kW	11,7					
capacity index		80					
weight casing style F / R / C	kg	81/97/92					
air inlet temperature	°C	20					
discharge air temperature	°C	30 - 45					
speed		<b>1</b>	<b>2</b>	<b>3</b>	<b>4</b>	<b>5</b>	<b>6</b>
air volume	m <sup>3</sup> /h	730	1100	1320	1780	1960	2300
heating capacity	kW	5,3	7,2	8,1	9,9	10,6	11,7
sound pressure level at 3m	dB(A)	26	35	40	47	51	54

## DX heating

<b>SRV/Q M-200-DK</b>							
nominal unit length	m	<b>2</b>					
door height	m	<b>2.2 - 2.8</b>					
electrical supply	V/ph/Hz	230/1/50					
max. input current (1 phase)	A	2,49					
max. fan power	kW	0,54					
max. specific fan power	W/l/s	0,63					
max heating capacity	kW	15,2					
capacity index		100					
weight casing style F / R / C	kg	101/122/116					
air inlet temperature	°C	20					
discharge air temperature	°C	30 - 45					
speed		<b>1</b>	<b>2</b>	<b>3</b>	<b>4</b>	<b>5</b>	<b>6</b>
air volume	m <sup>3</sup> /h	970	1470	1750	2370	2610	3070
heating capacity	kW	6,9	9,4	10,6	12,9	13,8	15,2
sound pressure level at 3m	dB(A)	28	37	42	48	53	56

<b>SRV/Q M-250-DK</b>							
nominal unit length	m	<b>2,5</b>					
door height	m	<b>2.2 - 2.8</b>					
electrical supply	V/ph/Hz	230/1/50					
max. input current (1 phase)	A	3,12					
max. fan power	kW	0,67					
max. specific fan power	W/l/s	0,63					
max heating capacity	kW	21,1					
capacity index		140					
weight casing style F / R / C	kg	125/151/143					
air inlet temperature	°C	20					
discharge air temperature	°C	30 - 45					
speed		<b>1</b>	<b>2</b>	<b>3</b>	<b>4</b>	<b>5</b>	<b>6</b>
air volume	m <sup>3</sup> /h	1210	1840	2190	2960	3270	3840
heating capacity	kW	9,2	12,7	14,5	17,8	19	21,1
sound pressure level at 3m	dB(A)	29	38	43	49	54	57

# DX heating

<b>SRV/Q L-100-DK</b>							
nominal unit length	m	<b>1</b>					
door height	m	<b>2.5 - 3.3</b>					
electrical supply	V/ph/Hz	230/1/50					
max. input current (1 phase)	A	3,03					
max. fan power	kW	0,57					
max. specific fan power	W/l/s	0,66					
max heating capacity	kW	17,1					
capacity index		125					
weight casing style F / R / C	kg	72/85/83					
air inlet temperature	°C	20					
discharge air temperature	°C	30 - 45					
speed		<b>1</b>	<b>2</b>	<b>3</b>	<b>4</b>	<b>5</b>	<b>6</b>
air volume	m <sup>3</sup> /h	1010	1440	1710	2240	2680	3140
heating capacity	kW	7,6	10,1	11,4	13,8	15,5	17,1
sound pressure level at 3m	dB(A)	33	40	43	48	53	56

<b>SRV/Q L-150-DK</b>							
nominal unit length	m	<b>1,5</b>					
door height	m	<b>2.5 - 3.3</b>					
electrical supply	V/ph/Hz	230/1/50					
max. input current (1 phase)	A	4,55					
max. fan power	kW	0,86					
max. specific fan power	W/l/s	0,66					
max heating capacity	kW	25,6					
capacity index		200					
weight casing style F / R / C	kg	106/124/121					
air inlet temperature	°C	20					
discharge air temperature	°C	30 - 45					
speed		<b>1</b>	<b>2</b>	<b>3</b>	<b>4</b>	<b>5</b>	<b>6</b>
air volume	m <sup>3</sup> /h	1510	2160	2560	3360	4020	4720
heating capacity	kW	11,4	15,1	17,1	20,7	23,2	25,6
sound pressure level at 3m	dB(A)	34	41	44	50	54	58



## DX heating

<b>SRV/Q L-200-DK</b>							
nominal unit length	m	<b>2</b>					
door height	m	<b>2.5 - 3.3</b>					
electrical supply	V/ph/Hz	230/1/50					
max. input current (1 phase)	A	6,07					
max. fan power	kW	1,15					
max. specific fan power	W/l/s	0,66					
max heating capacity	kW	32,3					
capacity index		250					
weight casing style F / R / C	kg	134/159/155					
air inlet temperature	°C	20					
discharge air temperature	°C	30 - 45					
speed		<b>1</b>	<b>2</b>	<b>3</b>	<b>4</b>	<b>5</b>	<b>6</b>
air volume	m <sup>3</sup> /h	2010	2880	3410	4480	5360	6290
heating capacity	kW	14,9	19,5	22	26,4	29,5	32,3
sound pressure level at 3m	dB(A)	36	43	46	51	56	59

<b>SRV/Q L-250-DK</b>							
nominal unit length	m	<b>2,5</b>					
door height	m	<b>2.5 - 3.3</b>					
electrical supply	V/ph/Hz	230/1/50					
max. input current (1 phase)	A	7,58					
max. fan power	kW	1,44					
max. specific fan power	W/l/s	0,66					
max heating capacity	kW	34,4					
capacity index		250					
weight casing style F / R / C	kg	167/199/193					
air inlet temperature	°C	20					
discharge air temperature	°C	30 - 45					
speed		<b>1</b>	<b>2</b>	<b>3</b>	<b>4</b>	<b>5</b>	<b>6</b>
air volume	m <sup>3</sup> /h	2520	3610	4270	5600	6700	7860
heating capacity	kW	16,9	21,8	24,3	28,7	31,7	34,4
sound pressure level at 3m	dB(A)	37	44	47	52	57	60

## DX heating

<b>SRV/Q XL-100-DK</b>							
nominal unit length	m	<b>1</b>					
door height	m	<b>3 - 4</b>					
electrical supply	V/ph/Hz	230/1/50					
max. input current (1 phase)	A	5,02					
max. fan power	kW	1,03					
max. specific fan power	W/l/s	0,94					
max heating capacity	kW	19,6					
capacity index		125					
weight casing style F / R / C	kg	76/89/87					
air inlet temperature	°C	20					
discharge air temperature	°C	30 - 45					
speed		<b>1</b>	<b>2</b>	<b>3</b>	<b>4</b>	<b>5</b>	<b>6</b>
air volume	m <sup>3</sup> /h	1170	1580	2030	2720	3370	3950
heating capacity	kW	8,5	10,8	12,9	15,7	17,9	19,6
sound pressure level at 3m	dB(A)	38	42	47	52	57	62

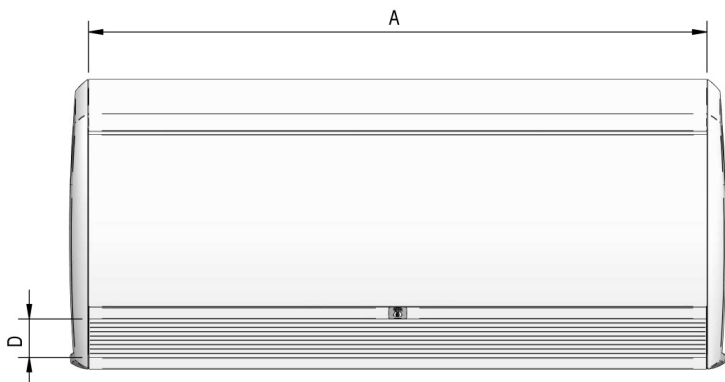
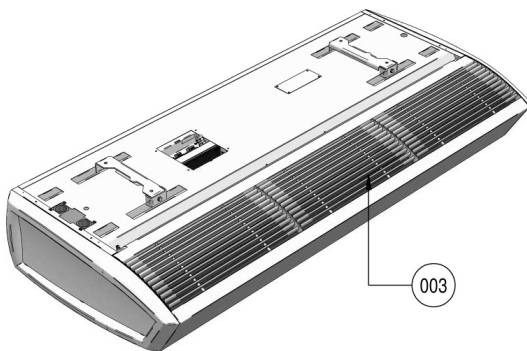
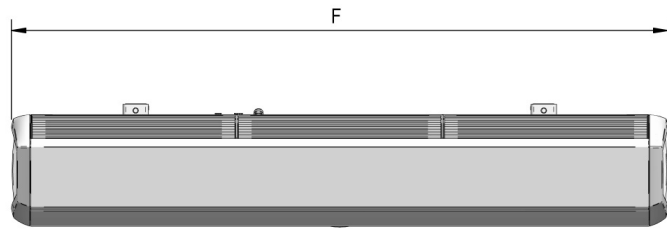
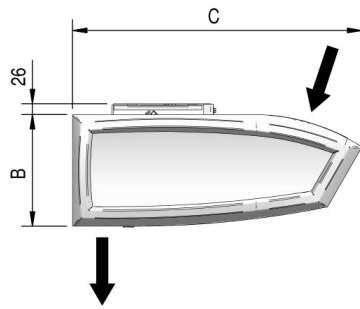
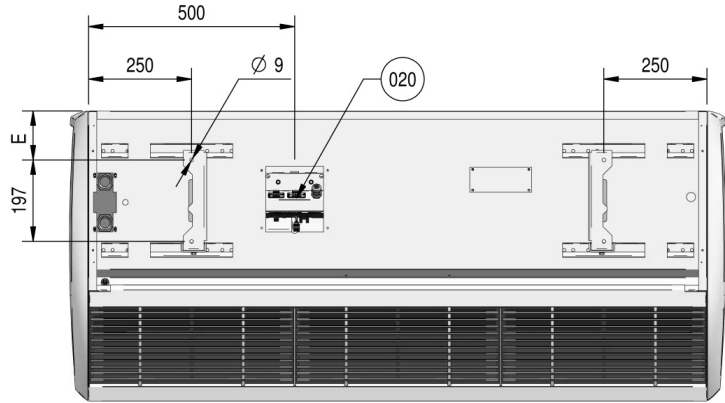
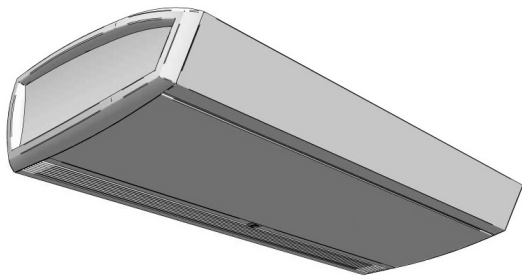
<b>SRV/Q XL-150-DK</b>							
nominal unit length	m	<b>1,5</b>					
door height	m	<b>3 - 4</b>					
electrical supply	V/ph/Hz	230/1/50					
max. input current (1 phase)	A	7,53					
max. fan power	kW	1,54					
max. specific fan power	W/l/s	0,94					
max heating capacity	kW	29,2					
capacity index		200					
weight casing style F / R / C	kg	112/130/127					
air inlet temperature	°C	20					
discharge air temperature	°C	30 - 45					
speed		<b>1</b>	<b>2</b>	<b>3</b>	<b>4</b>	<b>5</b>	<b>6</b>
air volume	m <sup>3</sup> /h	1750	2370	3050	4090	5060	5920
heating capacity	kW	12,8	16,2	19,3	23,4	26,7	29,2
sound pressure level at 3m	dB(A)	39	44	48	54	59	63

## DX heating

<b>SRV/Q XL-200-DK</b>							
nominal unit length	m	<b>2</b>					
door height	m	<b>3 - 4</b>					
electrical supply	V/ph/Hz	230/1/50					
max. input current (1 phase)	A	10,04					
max. fan power	kW	2,05					
max. specific fan power	W/l/s	0,94					
max heating capacity	kW	36,4					
capacity index		250					
weight casing style F / R / C	kg	143/168/164					
air inlet temperature	°C	20					
discharge air temperature	°C	30 - 45					
speed		<b>1</b>	<b>2</b>	<b>3</b>	<b>4</b>	<b>5</b>	<b>6</b>
air volume	m <sup>3</sup> /h	2330	3170	4060	5450	6740	7890
heating capacity	kW	16,7	20,9	24,7	29,7	33,6	36,4
sound pressure level at 3m	dB(A)	41	45	50	55	60	65

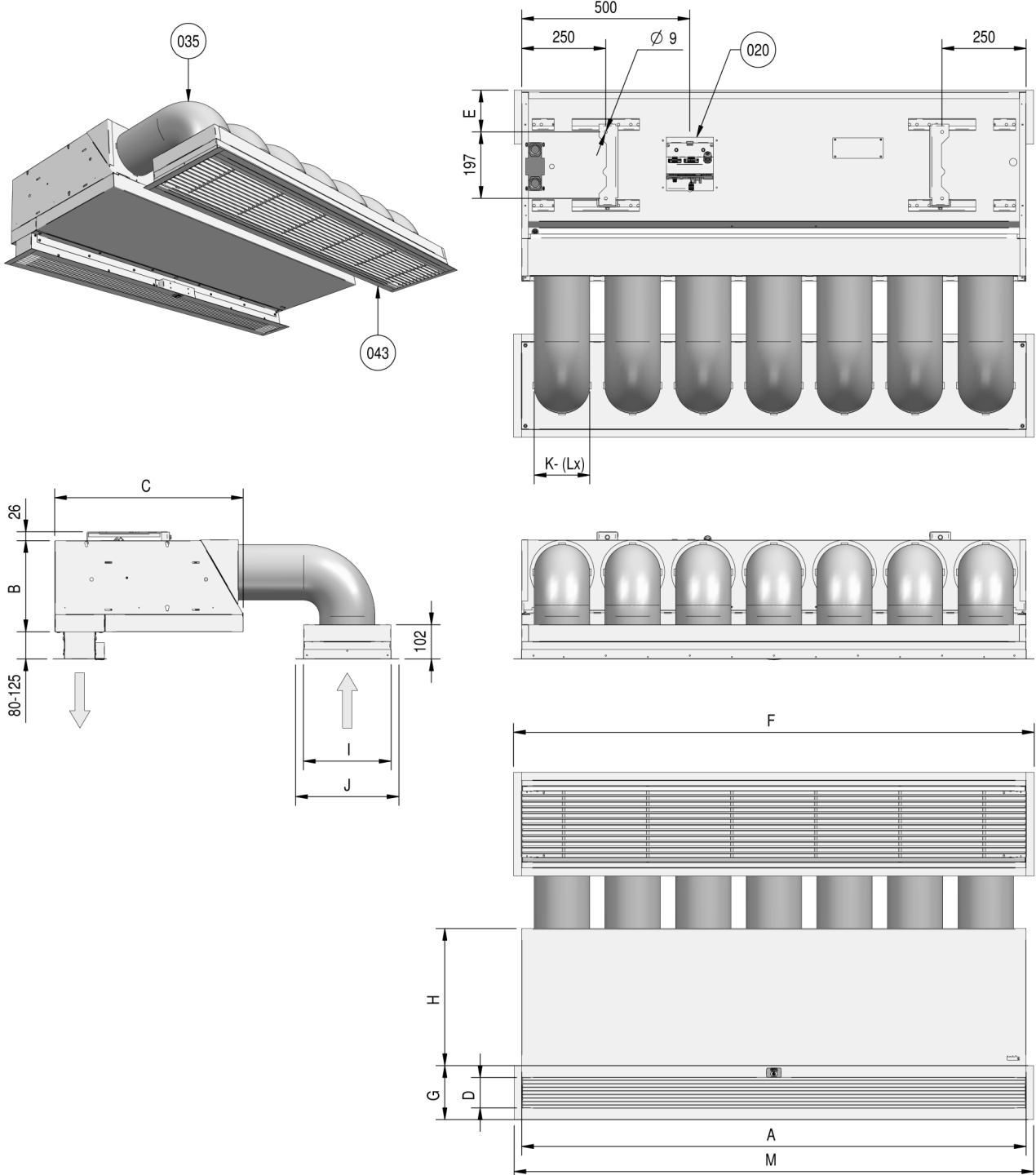
<b>SRV/Q XL-250-DK</b>							
nominal unit length	m	<b>2,5</b>					
door height	m	<b>3 - 4</b>					
electrical supply	V/ph/Hz	230/1/50					
max. input current (1 phase)	A	12,55					
max. fan power	kW	2,57					
max. specific fan power	W/l/s	0,94					
max heating capacity	kW	38,3					
capacity index		250					
weight casing style F / R / C	kg	176/208/202					
air inlet temperature	°C	20					
discharge air temperature	°C	30 - 45					
speed		<b>1</b>	<b>2</b>	<b>3</b>	<b>4</b>	<b>5</b>	<b>6</b>
air volume	m <sup>3</sup> /h	2920	3960	5080	6810	8430	9870
heating capacity	kW	18,8	23,2	27,1	31,9	35,6	38,3
sound pressure level at 3m	dB(A)	42	46	51	56	61	66

# Free hanging model



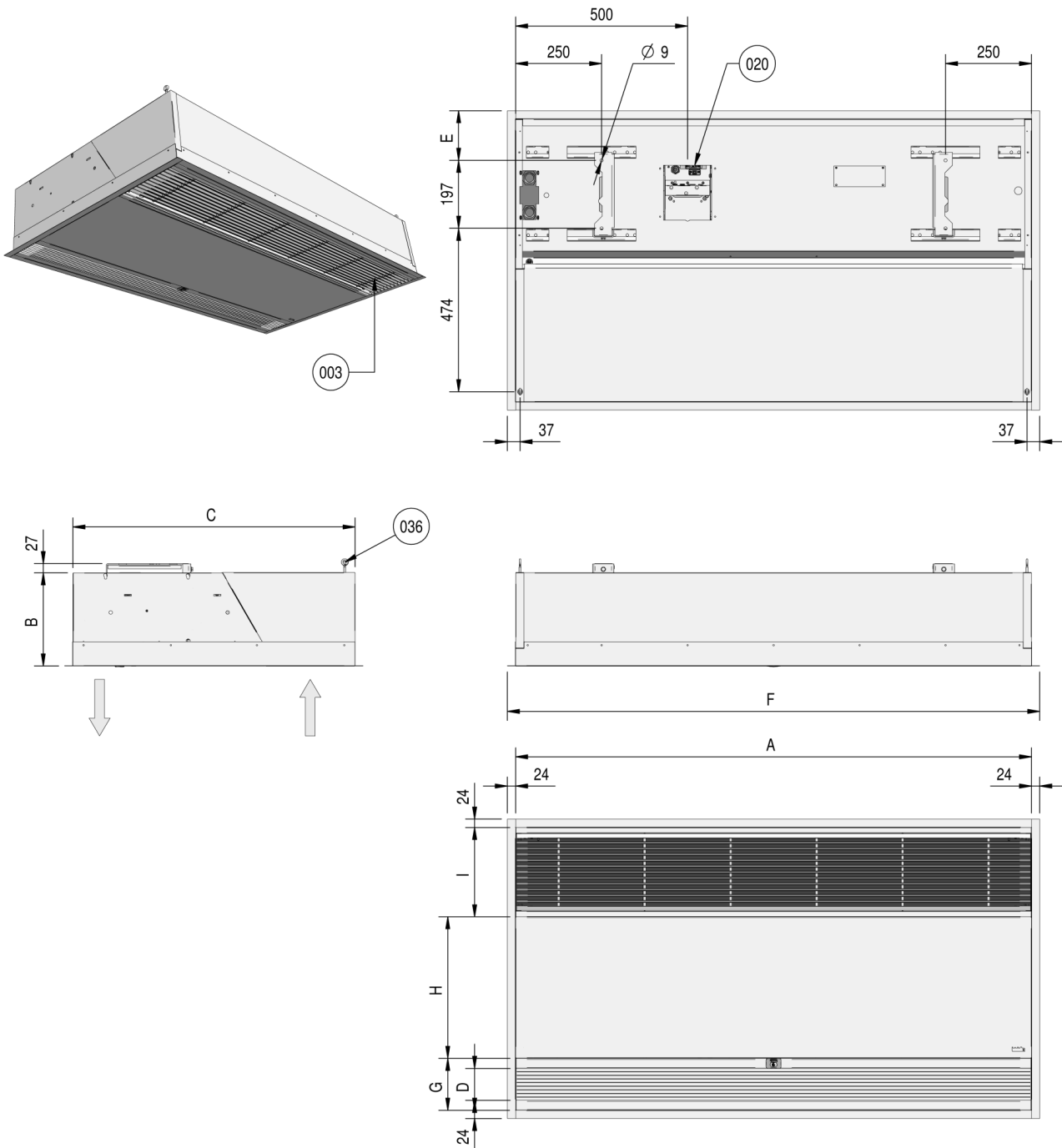
	A	B	C	D	E	F
SR S / M 100	1000	270	702	93	119	1093
SR S / M 150	1500	270	702	93	119	1593
SR S / M 200	2000	270	702	93	119	2093
SR S / M 250	2500	270	702	93	119	2593
SR L / XL 100	1000	370	940	125	200	1138
SR L / XL 150	1500	370	940	125	200	1638
SR L / XL 200	2000	370	940	125	200	2138
SR L / XL 250	2500	370	940	125	200	2638

# Recessed model



	A	B	C	D	E	F	G	H	I	J	K	L	M
SR S / M 100	1000	270	561	90	125	1048	160	406	261	307	$\varnothing 160$	5	1045
SR S / M 150	1500	270	561	90	125	1548	160	406	261	307	$\varnothing 160$	7	1545
SR S / M 200	2000	270	561	90	125	2048	160	406	261	307	$\varnothing 160$	10	2045
SR S / M 250	2500	270	561	90	125	2548	160	406	261	307	$\varnothing 160$	12	2545
SR L / XL 100	1000	370	745	122	206	1048	191	559	361	407	$\varnothing 250$	3	1045
SR L / XL 150	1500	370	745	122	206	1548	191	559	361	407	$\varnothing 250$	5	1545
SR L / XL 200	2000	370	745	122	206	2048	191	559	361	407	$\varnothing 250$	6	2045
SR L / XL 250	2500	370	745	122	206	2548	191	559	361	407	$\varnothing 250$	8	2545

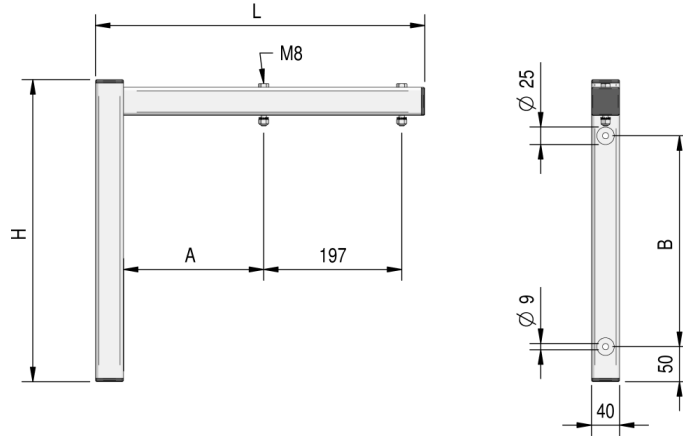
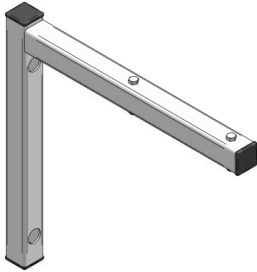
# Cassette model



	A	B	C	D	E	F	G	H	I
SR S / M 100	1000	270	821	93	144	1048	150	411	260
SR S / M 150	1500	270	821	93	144	1548	150	411	260
SR S / M 200	2000	270	821	93	144	2048	150	411	260
SR S / M 250	2500	270	821	93	144	2548	150	411	260
SR L / XL 100	1000	370	1105	125	175	1048	182	564	360
SR L / XL 150	1500	370	1105	125	175	1548	182	564	360
SR L / XL 200	2000	370	1105	125	175	2048	182	564	360
SR L / XL 250	2500	370	1105	125	175	2548	182	564	360

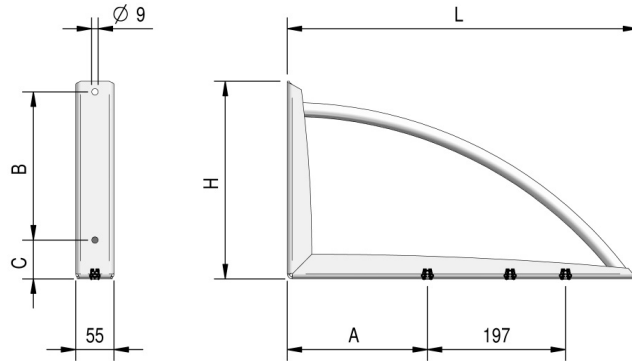
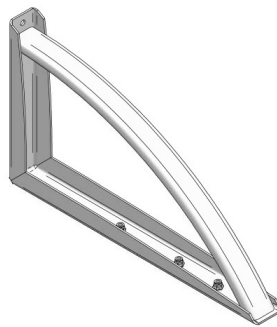
# Wall suspension brackets

## Standard



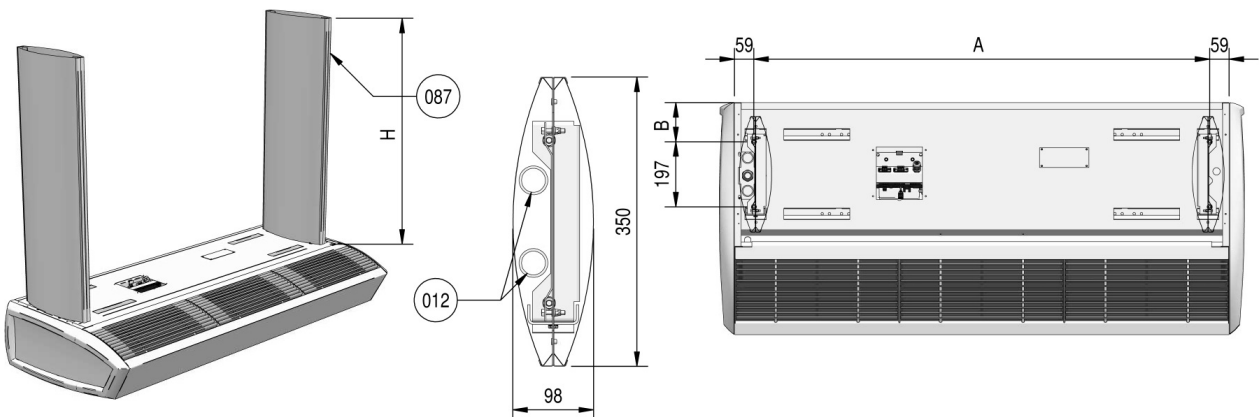
	L	H	A	B
SR S/M	389	330	119	200
SR L/XL	470	430	200	300

## Design



	L	H	A	B	C
SR S/M	425	240	119	190	35
SR L/XL	500	280	200	210	55

# Threaded rod covers

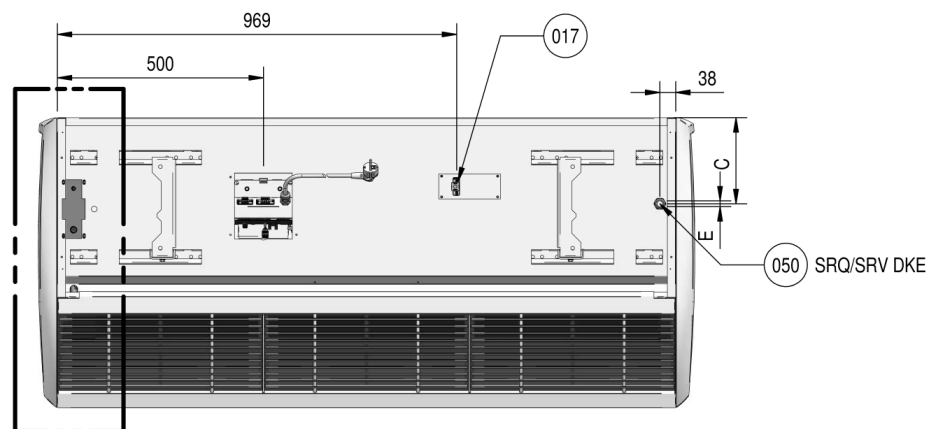
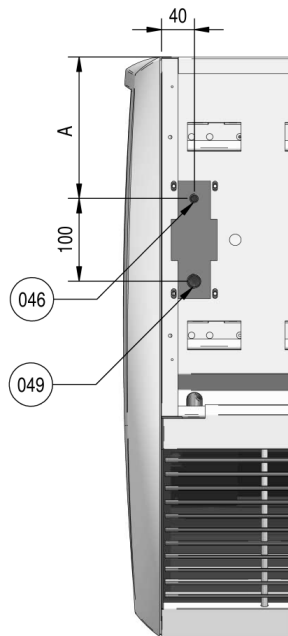


	A	B
SR 100	882	119 (S/M) 200 (L/XL)
SR 150	1382	
SR 200	1882	
SR 250	1191 (2x)	

Size H is the distance between unit and ceiling. This size needs to be communicated on the order.

# Connections

## DX



	A	C	E
SR S-100	170	208	PG16
SR S-150	170	208	PG16
SR S-200	170	208	PG21
SR S-250	170	208	PG21
SR M-100	170	208	PG16
SR M-150	170	208	PG16
SR M-200	170	208	PG21
SR M-250	170	208	PG21
SRL / XL-100	245	289	PG21
SRL / XL-150	245	289	PG21
SRL / XL-200	245	289	PG21
SRL / XL-250	245	289	PG29



# Index

The corresponding numbers in the dimensional sketches are explained below:

- 3 - Air inlet grille with filter
- 20 - Connection plate
- 35 - Ducts are not supplied
- 43 - Finishing sections supplied separately
- 36 - Eye bolt M6
- 12 - Pipework
- 87 - Threaded rod covers (position is flexible)
- 17 - Connection Daikin units
- 46 - Fluid connection
- 49 - Gas connection
- 50 - Gland

## Explanation dimensional sketches

### Models

**Free hanging:** by removing the end panels, the units are easy to interlink.

**Cassette:** daylight opening if cover moldings are used in a suspended ceiling =  $(A+8) \times (C+8)$  mm.

**Recessed:** daylight openings if cover moldings are used:

- for air discharge  $(A+8) \times (D+8)$  mm
- for air inlet:  $(A+8) \times (I+8)$  mm

If the recessed model is to be built into a cove, it is also available in a design that has no inlet air plenum or flexible ducts. To prevent bad air from let in, the cove will need to be air-tight.

### Wall suspension brackets and threaded rod covers

- Size H is the distance between unit and ceiling. This size needs to be communicated on the order.
- Material threaded rod covers: zink coated plate steel, painted, standard colour RAL 9016 and RAL 9006.

### Note

- All dimensions are in mm.
- SR 2500 mm units have 3 suspension brackets. All other sizes have 2 suspension brackets.

# Notes

# Notes



**Biddle Air Systems Limited**

St. Mary's Road  
Warwickshire CV11 5AU Nuneaton

T +44 24 7638 4233  
E [sales@biddle-air.co.uk](mailto:sales@biddle-air.co.uk)  
I [www.biddle-air.co.uk](http://www.biddle-air.co.uk)

Subject to change without prior notice